

Local Linked Support

How we provide short-term support in Braintree district, Colchester borough and Harlow for adults with a learning disability and/or autism and their carers



Introduction

The Local Linked Support (LLS) team at Essex County Council works with the adult to meet their own outcomes through connecting with community resources and opportunities.

We work alongside the adult to understand what is most important to them, supporting to plan the next steps to achieve their goals and aspirations.

The LLS team offers short term support for up to four months to adults with a learning disability and/or autism and their carers who are not in receipt of commissioned care and support through Adult Social Care.

A formal diagnosis is not required, though if the primary needs arise from a physical or mental impairment/illness, LLS would not be the appropriate referral pathway.

What is the LLS approach?

The Local Linked Support Team will:

- Use a collaborative approach to person-centred planning with a clear focus on individuals' goals, wishes and outcomes
- Provide advice, guidance, connections and short-term support for up to four months
- Utilise community options, working in partnership with communities to develop new, creative opportunities for adults and their families

Connecting adults with (but not limited to):

- Local groups that will promote autonomy, independence, wellbeing and individuality
- Assistive technology and equipment solutions
- Housing-related support
- Welfare benefits organisations
- Money management/advice services
- Employment, education and training opportunities
- Health support
- Mental health and wellbeing



Picture: Realise Futures, Essex

Who are we?

We are a small team of social workers, occupational therapists, community support workers and apprentices. We cover the Colchester borough, Harlow and Braintree districts.

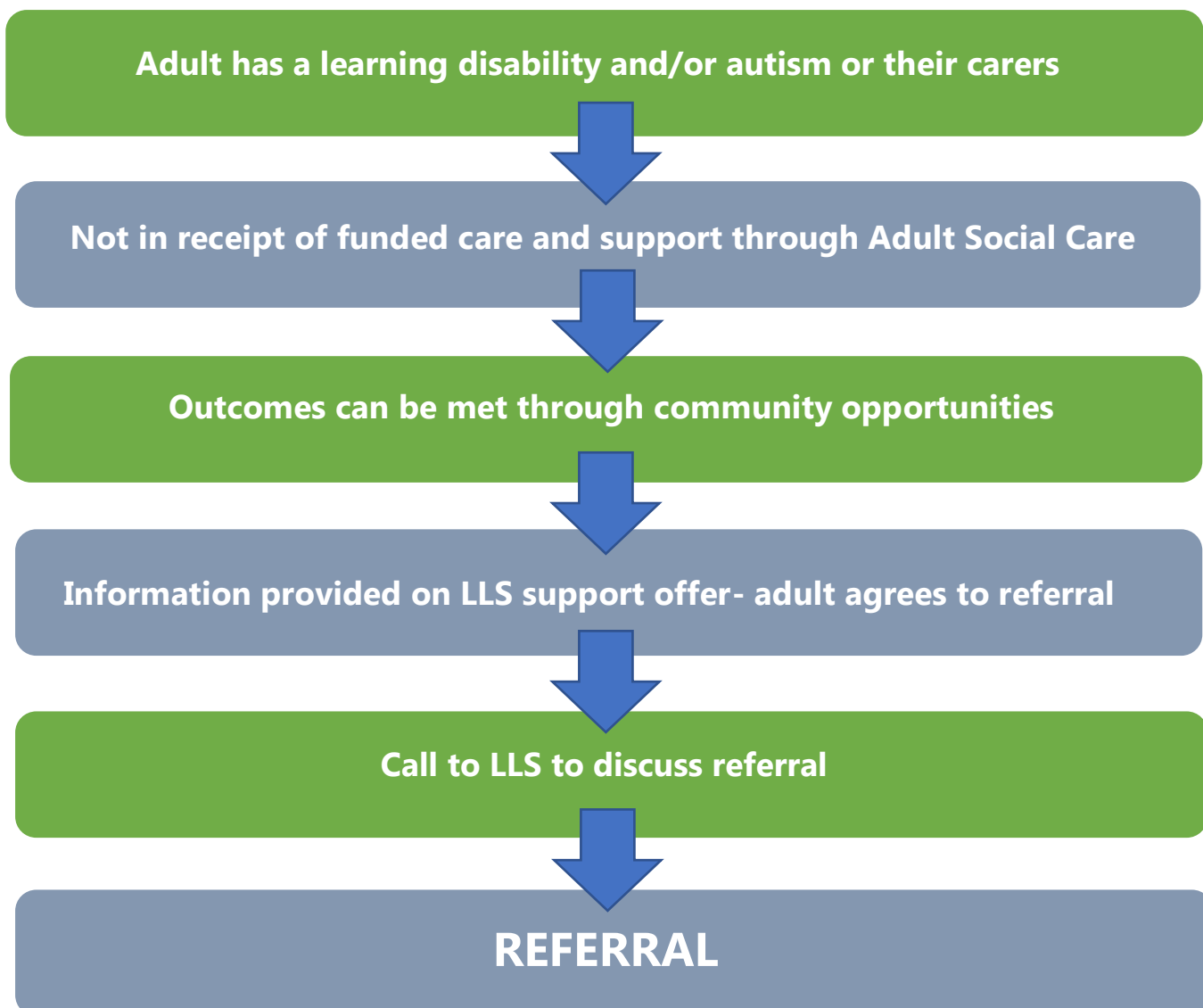
We are community-based: Located in the community, using existing community spaces which are welcoming and accessible

We are community-led: Connecting people to opportunities and other people in their own communities

We are person-centered: Working to understand what is important for the individual, providing support which enables people to achieve personal ambitions, goals and aspirations



The referrals path



CONTACT US: 03330130593 (Colchester and Braintree)

03330136492 (Harlow)

EMAIL: llscolchester@essex.gov.uk

llsbraintree@essex.gov.uk llsharlow@essex.gov.uk

